



Custom Track Service
Projected Life

ZIEGLER, INC. (E500)

AMES

Prepared By: Drew Tschida

Model	D8RLRC	Job Site	Offutt AFB		Inspection Date	09Nov21
Manufacturer	Caterpillar		<u>Left</u>	<u>Right</u>	Next Inspection Date	--
Serial Number	7XM03513	Track Sag (4.1 in - 4.9 in)	--	--	Next Inspection Hours	--
Reference Number	1998005	Frame Ext (max 6 in)	2.6 in	2.6 in	Underfoot Conditions	
Hour Meter Reading	28,832	Frame Ext %	43%	43%	Impact	Moderate
Hours Per Week	--	Dry Joints	--	--	Abrasion	Moderate
Total Odometer Reading	--	Track Shoe Width	24 in	24 in	Moisture	Moderate
Forward Odometer	--	Link Roller System	38%	33%	Packing	Moderate
Reverse Odometer	--				Bushing Allowable Wear	Greater
Distance Per Week	--				Link Allowable Wear	Greater

GROUP	RECOMMENDATION	% WORN	PROJECTED SMU AT 100%	PROJECTED SMU AT 120%	PROJECTED DATE AT 100%	PROJECTED DATE AT 120%
TRACK LINK	Good	14% (5.83 in)	14% (5.83 in)	--	--	--
	NOTES: 8E-4514			NOTES:		
BUSHING (EXT)	Good	32% (0.52 in)	32% (0.52 in)	--	--	--
	NOTES: Not Turned			NOTES:		
TRACK SHOE	Good	19% (2.91 in)	19% (2.91 in)	--	--	--
FRONT IDLER	Good	2% (0.79 in)	18% (0.87 in)	--	--	--
REAR IDLER	Good	18% (0.87 in)	26% (0.91 in)	--	--	--
TRACK ROLLER FRONT	Monitor	61% (1.18 in)	52% (1.1 in)	--	--	--
2	Good	43% (0.98 in)	43% (0.98 in)	--	--	--
3	Good	37% (0.98 in)	47% (1.06 in)	--	--	--
SPROCKET	Good	10% (9.33 in)	10% (9.33 in)	--	--	--
	CONDITION:Good			CONDITION:Good		

General Recommendations

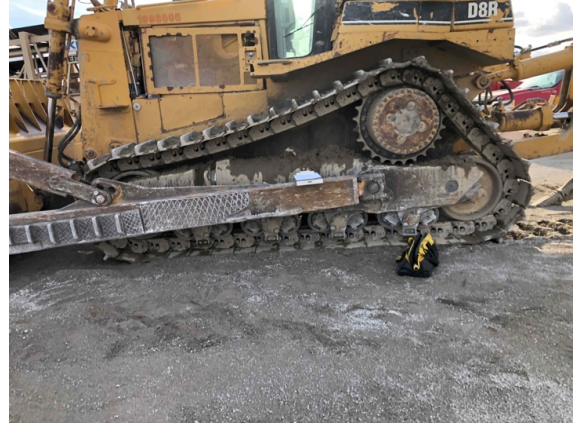
--



Pre-Inspect



Pre-Inspect



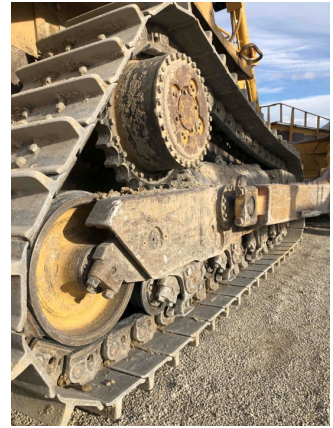
Pre-Inspect



Pre-Inspect



Pre-Inspect



Pre-Inspect



Pre-Inspect